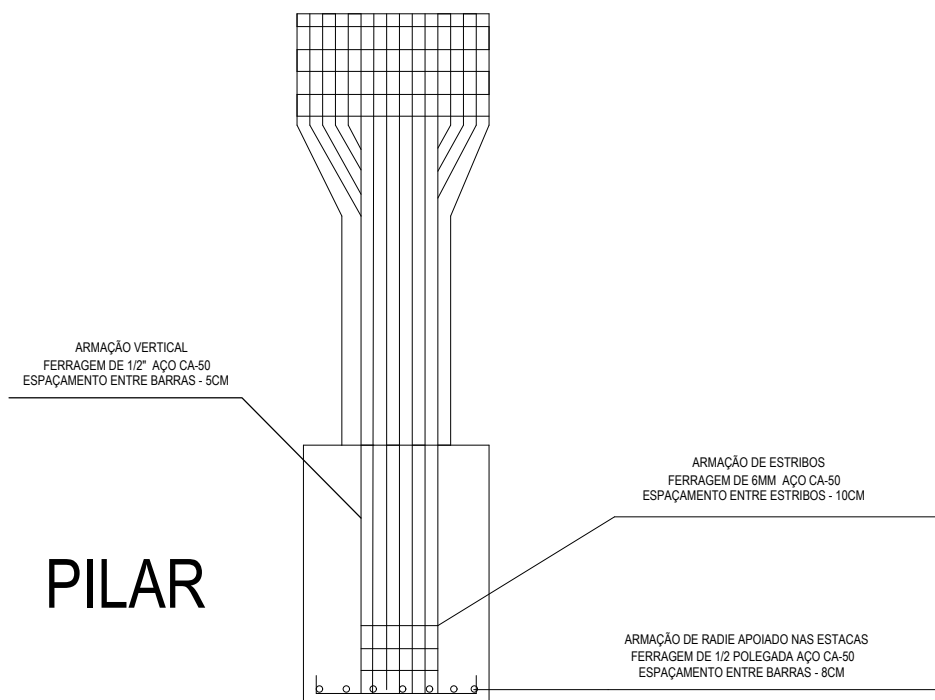
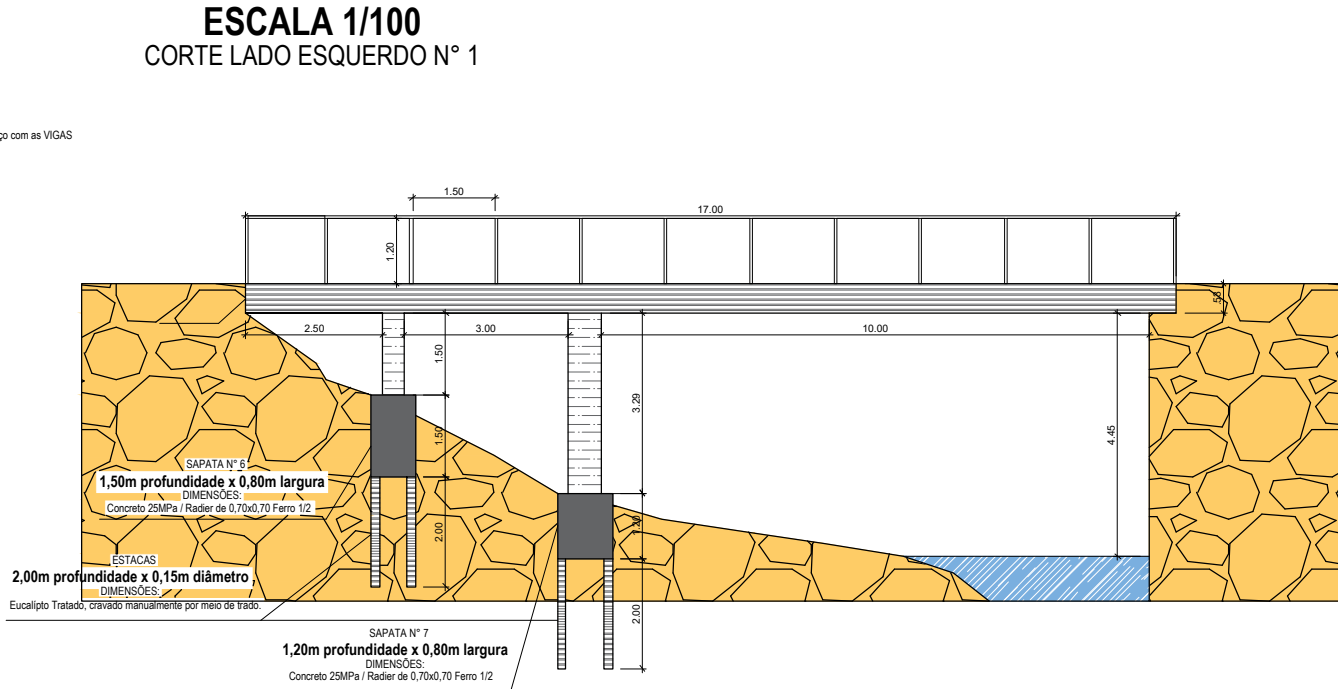
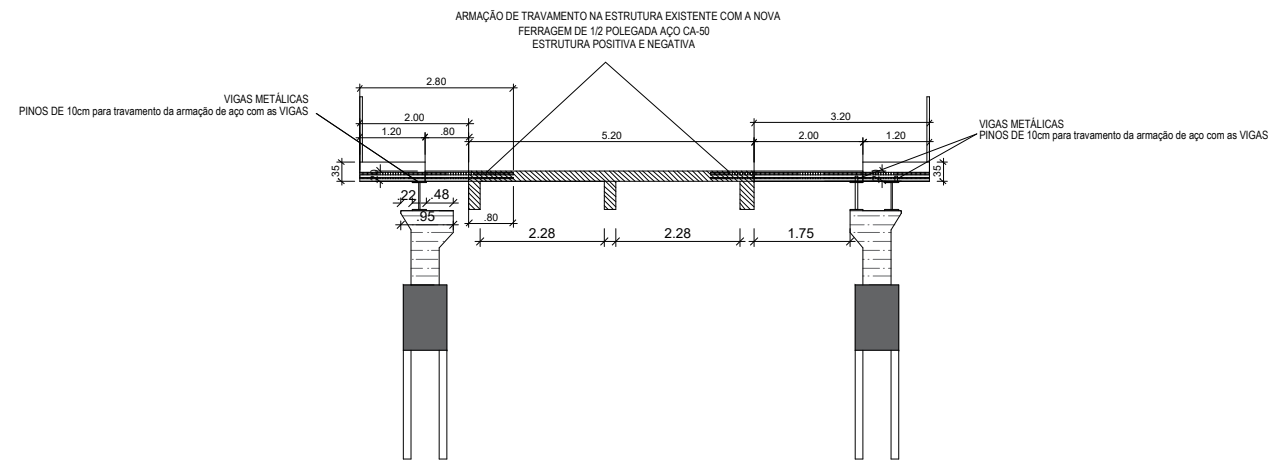
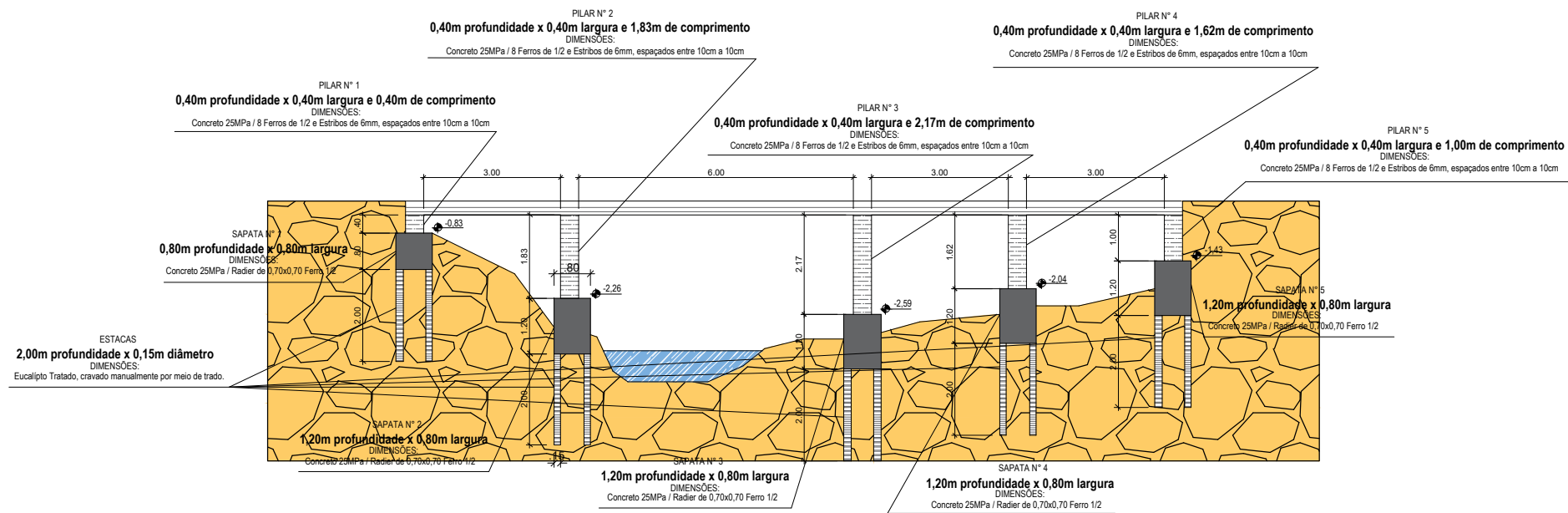
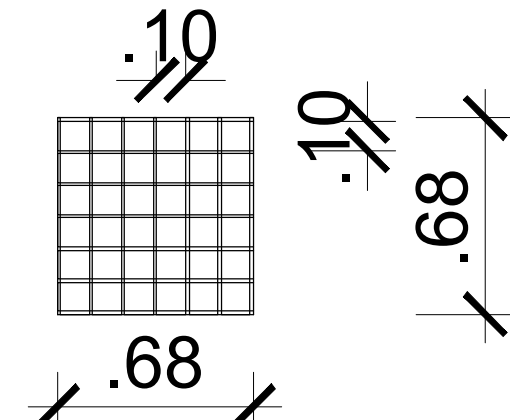


TABELA TÉCNICA DOS PERFILES USADOS NAS VIGAS DAS PONTES FORNECIDAS PELA FERRO E AÇO TAKOMI									
W – PERFILES LAMINADOS (AÇOMINAS)									
REFORÇO NA BASE PARA VIGAS DE 10-15 E 18 METROS									
VÃO DA PONTE	VIGAS	d	tw	bf(s)	bf(i)	tf	esp.	Larg.	Comp.
8 metros	2 W530x92	53,3cm	1,02cm	20,9cm	20,9cm	1,56cm			
10 metros	2 W610x125	61,2cm	1,19cm	22,9cm	22,9cm	1,96cm	1,25cm	25cm	650cm
12 metros	2 W610X140	61,7cm	1,31cm	23cm	23cm	2,25cm			
15 metros	2 W610X140	61,7cm	1,31cm	23cm	23cm	2,25cm	2,5cm	21cm	950cm
18 metros	3 W610X140	61,7cm	1,31cm	23cm	23cm	2,25cm	1,6cm	21cm	1150cm



## RADIE



### PONTE DO HOSPITAL

OBSERVAÇÃO:

ESCALA: 1/100

ASSINATURA DO RESPONSÁVEL:

UNIDADES:

ASSINATURA DO PREFEITO: